

Specifications

Cylinders: Inline 6
Piston Displacement: 3520 cu. in. (58 L)
Bore & Stroke: 9.375" x 8.5" (238 x 216 mm)
Compression Ratio: 10.5:1
Jacket Water System Capacity: 48.5 gal. (184 L)
Lube Oil Capacity: 72 gal. (273 L)
Starting System: 125 - 150 psi air/gas 24/32V electric
Dry Weight: 15,000 lb. (6804 kg)

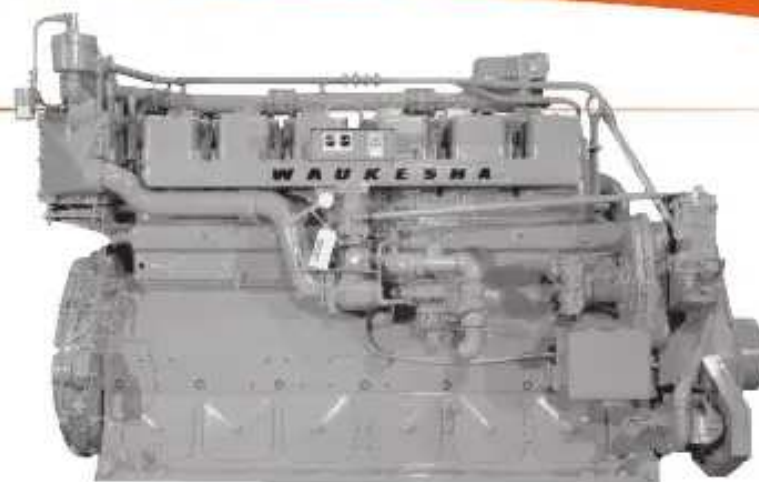


Image may not be an accurate representation of this model

Standard Equipment

AIR CLEANER - Dry type with rain shield and service indicator.

BARRING DEVICE - Manual.

BEARINGS - Heavy duty, replaceable, precision type.

BREATHER - Ejector type, extractor breather system.

CONNECTING RODS - Drop forged steel, rifle drilled.

CONTROL SYSTEM - Pneumatic. Includes pilot operated valves for air start and prelube. Engine mounted control panel with two push button valves. Pilot operated air start valves omitted when starter is not furnished by Waukesha. Includes engine On/Off push button. One mounted on either side of the engine.

CRANKCASE - Integral crankcase and cylinder frame. Main bearing caps drilled and tapped for temperature sensors. Does not include sensors.

CRANKSHAFT - Counterweighted, forged steel, seven main bearings, and dynamically balanced.

CYLINDERS - Removable wet type bainitic cast iron cylinder liners, chrome plated on outer diameter.

CYLINDER HEADS - Six interchangeable, two hard faced intake and two

FUEL SYSTEM - Natural gas, 4" (102 mm) duplex updraft carburetor. Mounted Fisher 99, 2" (51 mm) gas regulator, 43 - 60 psi (296 - 414 kPa) gas inlet pressure required. Prechamber fuel system and control logic.

GOVERNOR - Woodward UG-8LD hydraulic lever type, with friction type speed control. Mounted on right hand side.

IGNITION - Waukesha Custom Engine Control® Ignition Module. Electronic digital ignition system. 24V DC power required.

INTERCOOLER - Air-to-water.

LEVELING BOLTS

LIFTING EYES - Requires 9.5 ton Working Load Limit (W.L.L. anchor shackles.

LUBRICATION - Full pressure. Gear type pump. Full flow filter, 20 gallon (76 litres) capacity, not mounted. Includes flexible connections. Includes lube oil strainer, mounted on engine. Air/gas motor driven prelube pump. Requires final piping.

MANIFOLD - Exhaust, water cooled, vertical 5" (127 mm) pipe flange at rear and flexible stainless steel exhaust connection.

OIL COOLER - Shell and tube type. with thermostatic temperature

We and our 21 IAB TCF partners store and access information on your device for the following purposes: store and/or access information on a device, advertising and content measurement, audience research, and services development, personalised advertising, and personalised content.

Personal data may be processed to do the following: use precise geolocation data and actively scan device characteristics for identification.

Our third party IAB TCF partners may store and access information on your device such as IP address and device characteristics. Our IAB TCF Partners may process this personal data on the basis of legitimate interest, or with your consent. You may change or withdraw your preferences at any time by clicking on the cookie icon or link; however, as a consequence, you may not see relevant ads or personalized content.

Our website may use these cookies to:

- Measure the audience of the advertising on our website, without profiling
- Display personalized ads based on your navigation and your profile
- Personalize our editorial content based on your navigation
- Allow you to share content on social networks or platforms present on our website
- Send you advertising based on your location

[Privacy Policy](#)

[Third Parties](#)

Customize Your Choices

Accept All

Reject All

POWER RATINGS: F3521GL VHP Series Gas Engines

Model	C.R.	Bore & Stroke in. (mm)	Displ. cu. in. (litres)	Brake Horsepower (kWb Output) 130°F (54°C) I.C. Water Temperature							
				1200 RPM		1000 RPM		900 RPM		800 RPM	
				C	I	C	I	C	I	C	I
F3521GL	10.5:1	9.375" x 8.5" (238 x 216)	3520 (58)	738	738	615	615	554	554	493	493
				(550)	(550)	(459)	(459)	(413)	(413)	(367)	(367)

				1200 rpm		1000 rpm	
	Power bhp (kWb)			738 (550)		615 (459)	
	BSFC (LHV) Btu/bhp-hr (kJ/kWh)			7253 (10263)		7132 (10086)	
	Fuel Consumption Btu/hr x 1000 (kW)			5353 (1568)		4386 (1286)	
	NOx g/bhp-hr (mg/nm³ @ 5% O₂)			1.50 (607)		1.50 (607)	
Emissions	CO g/bhp-hr (mg/nm³ @ 5% O₂)			2.70 (1073)		2.70 (1073)	
	THC g/bhp-hr (mg/nm³ @ 5% O₂)			5.50 (2227)		5.50 (2227)	
	NMHC g/bhp-hr (mg/nm³ @ 5% O₂)			1.00 (405)		1.00 (405)	
	Heat to Jacket Water Btu/hr x 1000 (kW)			1484 (435)		1230 (360)	
Heat Balance	Heat to Lube Oil Btu/hr x 1000 (kW)			227 (66)		186 (54)	
	Heat to Intercooler Btu/hr x 1000 (kW)			276 (81)		227 (67)	
	Heat to Radiation Btu/hr x 1000 (kW)			179 (52)		165 (48)	
	Total Exhaust Heat Btu/hr x 1000 (kW)			1509 (442)		1177 (345)	
Intake/ Exhaust System	Induction Air Flow scfm (Nm³/hr)			1869 (2873)		1531 (2354)	
	Exhaust Flow lb/hr (kg/hr)			8111 (3679)		6645 (3014)	
	Exhaust Temperature °F (°C)			703 (373)		658 (348)	

Typical heat data is shown, however no guarantee is expressed or implied. Consult your Dresser Waukesha Application Engineering Department for system application assistance.

All natural gas engine ratings are based on a fuel of 900 Btu/ft³ (35.3 MJ/nm³) SLHV, with a 91 WKl®. For conditions or fuels other than standard, consult the Dresser Waukesha Application Engineering Department.

Data based on standard conditions of 77°F (25°C) ambient temperature, 29.53 inches Hg (100kPa) barometric pressure, 30% relative humidity (0.3 inches HG / 1 kPa water vapor pressure).

Fuel consumption based on ISO3046/1-1995 with a tolerance of +5% for commercial quality natural gas having a 900 BTU/ft³ (35.3 MJ/nm³) SLHV.

Heat data based on fuel consumption +2%.

Heat rejection based on cooling exhaust temperature to 77°F (25°C).

Rating Standard: All models - Ratings are based on ISO 3046/1-1986 with mechanical efficiency of 90% and Tcra (clause 10.1) as specified above limited to ± 10° F (5° C). Ratings are also valid for SAE J1349, BS5514, DIN6271 and AP17B-11C standard atmospheric conditions.

C = ISO Standard Power/Continuous Power Rating: The highest load and speed which can be applied 24 hours per day, seven days per week, 365 days per year except for normal maintenance. It is permissible to operate the engine at up to 10% overload, or a maximum load indicated by the intermittent rating, whichever is lower, for two hours in every 24 hour period.

I = Intermittent Service Rating: The highest load and speed that can be applied in variable speed mechanical system application only. Operation at this rating is limited to a maximum of 3500 hours per year.

Consult your local Waukesha representative for custom application assistance. The manufacturer reserves the right to change or modify without notice, the design or

We and our 21 IAB TCF partners store and access information on your device for the following purposes: store and/or access information on a device, advertising and content measurement, audience research, and services development, personalised advertising, and personalised content.

Personal data may be processed to do the following: use precise geolocation data and actively scan device characteristics for identification.

Our third party IAB TCF partners may store and access information on your device such as IP address and device characteristics. Our IAB TCF Partners may process this personal data on the basis of legitimate interest, or with your consent. You may change or withdraw your preferences at any time by clicking on the cookie icon or link; however, as a consequence, you may not see relevant ads or personalized content.

Our website may use these cookies to:

- Measure the audience of the advertising on our website, without profiling
- Display personalized ads based on your navigation and your profile
- Personalize our editorial content based on your navigation
- Allow you to share content on social networks or platforms present on our website
- Send you advertising based on your location

[Privacy Policy](#)
[Third Parties](#)

Customize Your Choices

Accept All

Reject All